

liznylon
designs

Front Door 2026 Best Colours

The must have front door colours for 2026 including a new take on neutrals, lust after blues, go-to greens, and a couple unexpected standout shades

www.liznylon.com





Farrow & Ball Oxford Stone



classic heritage

A go-to soft, earthy beige with a warm undertone for a classic look. Inspired by cottages in Cotswold





Mylands Pale Lilac



elegant retro

A gentle warm blush-pink that adds a bit of fun & elegant twist to everyday neutrals. Extra punchy when paired with retro wallpaper or tiles



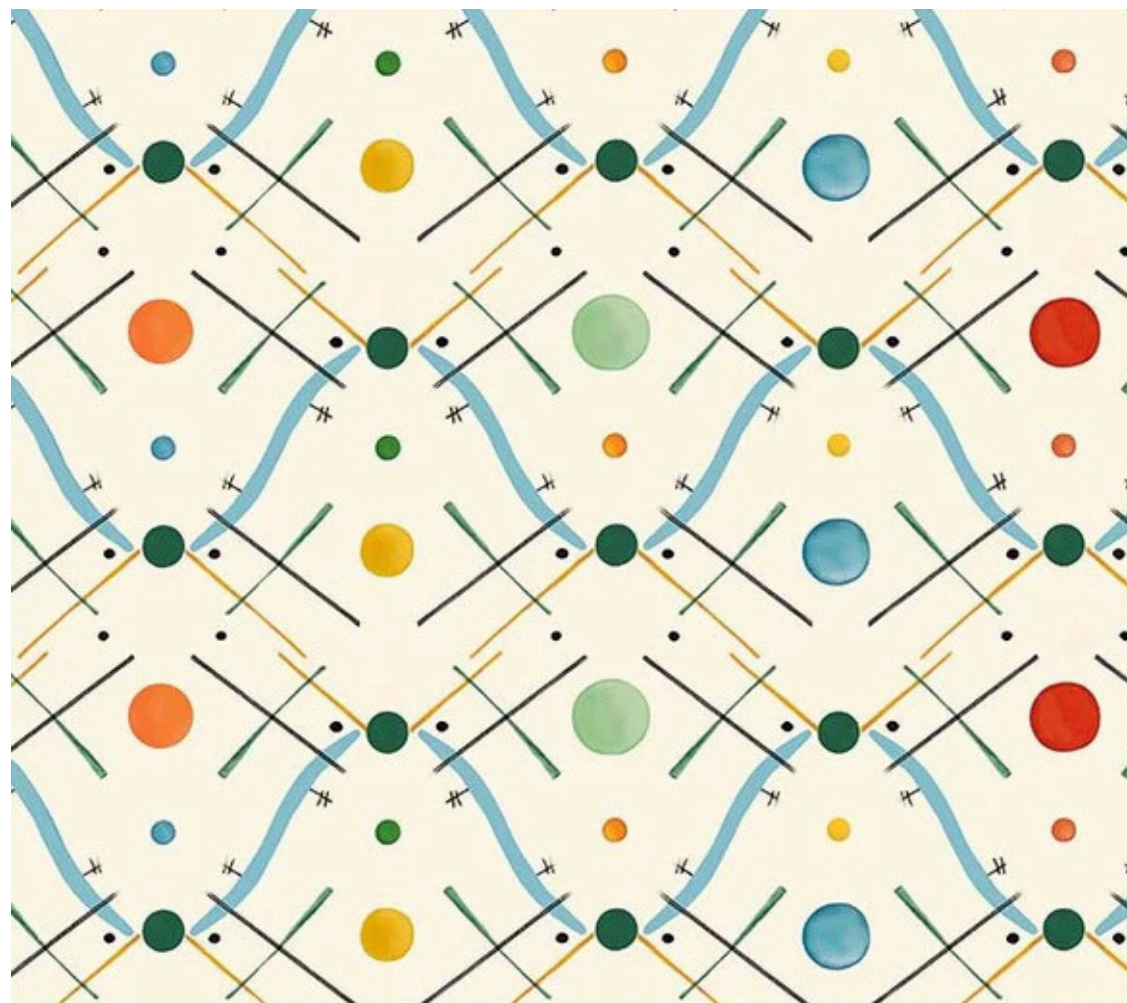


Craig & Rose Victoria



refreshingly blue

A perky blue that is welcoming and versatile, city living or beach living, this blue always works





Little Greene Basalt



dearest navy

Is it blue or is it black? This moody deep navy makes a timeless statement especially paired with wild floral wallpaper





Farrow & Ball Studio Green



power play

A deep olive that changes in the light, deep green to blue-grey to near black. A contemporary vibe when paired with striped tiles





Paint & Paper Library Sprig IV



springtime feels

A perfect blend of warm & cool, Sprig IV is charming & gives springtime vibes. Pair with a woodland mural to add drama



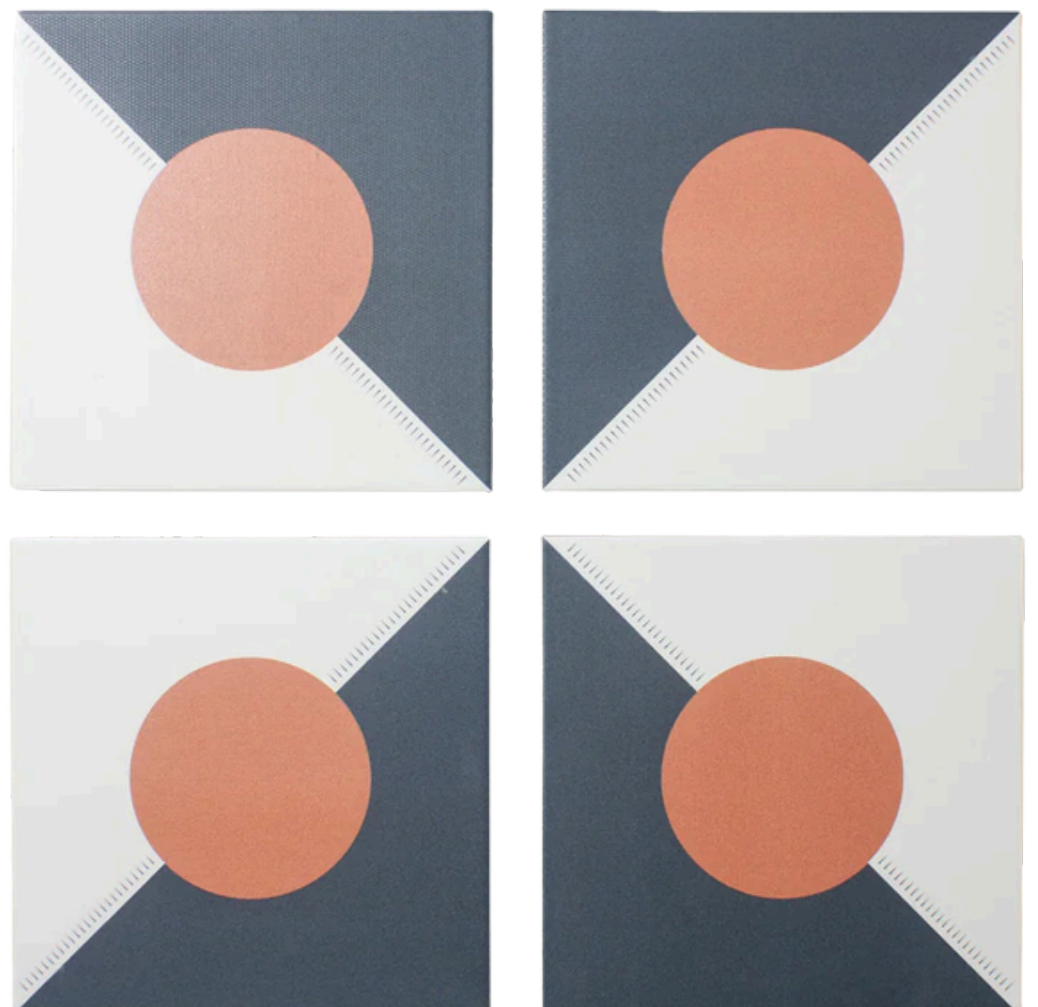


Lick Paint Red 02



terracotta dreams

A contemporary twist
on red, this dusty,
warm, earthy tone
is bold and
unapologetic



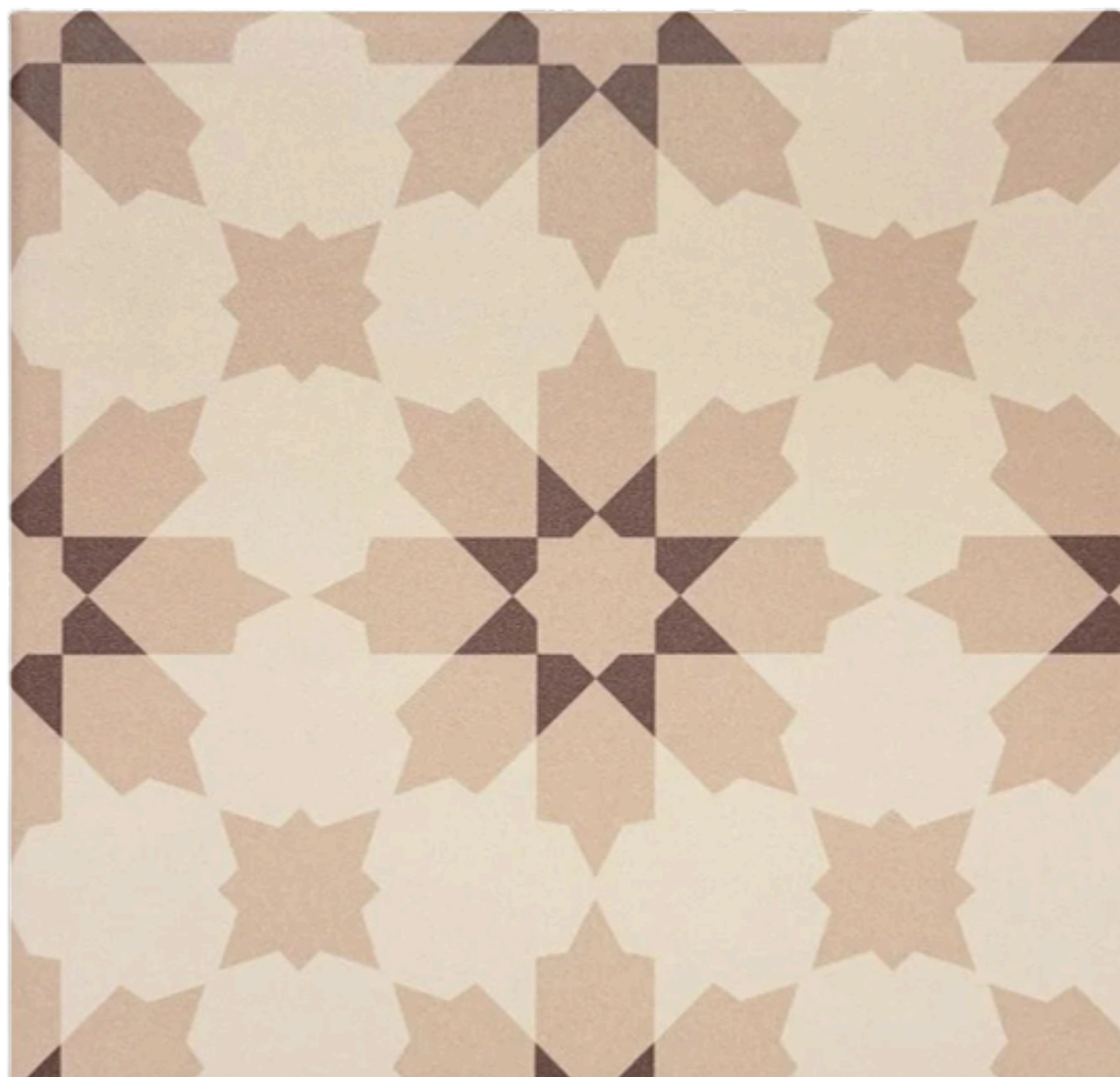


Little Greene Adventurer



The new luxe

A timeless aubergine that is historic and regal yet not as overbearing as red. Pair with muted blush and clay tiles



Front Door Colour Consult

If you are feeling a little stuck on what colour to choose for your front door and want some expert guidance, I'm here to help without overcomplicating things.

My Front Door Colour Consult Services helps you get it right the first time.

[More Information](#)

